

STEPHENS INTERNATIONAL PUBLIC SCHOOL

Holidays Homework for Class – 8th – 2018-19

ENGLISH:

- Q:1. Many people keep birds in cages for their pleasure. Others feel this as cruelty. Write an article in 150 words highlighting both sides of the issue and then express your own opinion about it.
- Q:2. Make a pocket dictionary of minimum 60 words from each section of unit 2 and 3 of your Course Book.
- Q:3. Make a model of different parts of speech. Give examples for each.
- Q:4. Your school is organize a summer camp for ten days during your summer break. Draft a notice to be put on the notice board inviting students to join the camp. Highlight the main attractions of the summer camp.
- Q:5. Complete the exercise of pronouns which is in your book 'The Grammarite'.
- Q:6. Do comprehensions of Unit 2 & Unit 3 given in Practice Book.

HINDI

- Q:1- fgmh l ekpkj i=ka l sfdllgha i kp foKki uka dks , d= dj , &4 'khV ij yxk , i RkFkk Lo ; a dk , d foKki u r\$ kj djA
- Q:2- _rj Hkkouk j l vFkok vll ; dkbZ Hkh fo"k ; ij dforkvka dk l dyu Rk\$ kj djarFkk viuh dYiuk 'kfDr ds vk/kkj ij dfork fy [ka
- Q:3- vkt dh Vvh&Qv h l Mel viuh 0 ; Fkk d\$ s crk , xh\ rks l Melka dh bl 0 ; Fkk dks l dkn ds : lk ea Li "V djA
- Q:4- *fon ; kFkhZ thou vueksy gA* vki vius vkt rd ds fon ; kFkhZ thou ds vu\$kkoka dks , d vu\$Nn ds : lk ea 0 ; Dr djA

MATHEMATICS

Use separate notebook for holiday's homework

- Q:1. Subtract:- $6m^3 - 4m^2 + 3m - 4$ from $8m^3 - 4m^2 - 4m + 4$
- Q:2. Simplify:- $a^2(a - 3b) - ab(b^2 - 2ab) - a(b^3 - 5a^2)$
- Q:3. Find the value of $(-10a^2b) \times (20a^2b^2)$ for $a = 2$, $b = -3$
- Q:4. Simplify:- $42p^2 - 8q(q - 1) - 7p(1 + 5p) + p(p - 1)$
- Q:5. What must be subtracted from $a^4 + 6a^3 + 13a^2 + 13a + 8$ so that the resulting polynomial is exactly divisible by $a^2 + 3a + 2$.
- Q:6. Find the value of x, if (i) $13x = (58)^2 - (45)^2$
(ii) $24x = (99)^2 - (87)^2$
- Q:7. Find the products of $\left(x^3 + \frac{1}{x^3}\right) \left(x^3 - \frac{1}{x^3}\right)$
- Q:8. Simplify:- (i) $\frac{23.71 \times 23.71 - 16.29 \times 16.25}{0.742}$
(ii) $1.42 \times 1.42 - 0.58 \times 0.58$
- Q:9. If $x + \frac{1}{x} = 14$, find the value of $\left(x^2 + \frac{1}{x^2}\right)$
- Q:10. Find $x^2 + y^2$ if $x - y = 9$ and $xy = 16$
- Q:11. If $x - \frac{1}{x} = 8$, find the value of $\left(x^2 + \frac{1}{x^2}\right)$ and $\left(x^4 + \frac{1}{x^4}\right)$
- Q:12. Solve and make practice of Chapter 4 & 5 of Mental Maths and Chapter Assessment.

Activities – 1 Make a chart of properties of Rational Number under Addition, Subtraction, Multiplication and Division with examples.

Activities – 2 Make a chart of types of Quadrilaterals, draw figures using match sticks.

SCIENCE

- Q:1. Prepare an experimental model to show that metals conduct electricity.
- Q:2. Write a complete note on Green Revolution, its implications on Indian agriculture. Make a report file for it.
- Q:3. Diagrammatically show the complete process of fractional distillation on a chart.
- Q:4. Learn complete lesson no. 5 "Coal and Petroleum".

STEPHENS INTERNATIONAL PUBLIC SCHOOL

Holidays Homework for Class – 8th – 2018-19

SOCIAL SCIENCE

Q:1. Project work:-

1. Many parts of India face water scarcity, especially during summer. Collect newspaper reports, pictures, etc. to prepare your very own report on 'Water Scarcity in India' and make of collage.
2. Collect information on both violent and non-violent revolts that occurred in the colonial period. Present the collected information on a chart paper.

Q:2. Map work:-

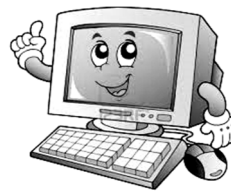
1. On a physical map of India, mark and label the following:-
(a) Tropical Rainforests (b) Tropical Deciduous forests
(c) Thorn forests (d) Tidal forests
(e) Himalayan forests
Shade each with different colours.

2. On a political map of India, mark and label the following:-
(a) Rice producing area (b) Wheat producing area
(c) Rubber producing area
Shade each with different colours.

Q:3. Answer the following questions:-

1. What are the steps taken by the Indian government to ensure equality for both men and women?
2. Did the British really want to educate Indians? Justify your answer with logical reasoning.
3. Do you agree that Bengaluru is losing out to Gurgaon and Pune as an IT hub? Give your reasons.

COMPUTERS



Note:- Write Holiday homework in your computer notebooks.

- Q:1. Search on the internet for the Topic "Database Management System" and write about 150 words on it in your computer notebook.
- Q:2. Draw the structures of different Network Topologies and define them.
- Q:3. Define the following terms:-
(a) Window Movie Maker
(b) Cyber crime
(c) E-Banking
(d) E-Commerce

URDU

- Q:1. Do Q.No. 1 and 2 (Chapter No. 1)
- Q:2. Fill in the blanks (Chapter No. 1 Page No. 9)
- Q:3. Breaking words (Chapter No. 2, Page No. 12)
- Q:4. Do Q.No. 1, 3 & 5 (Chapter No. 2)
- Q:5. Words-meaning (Chapter No. 3)
- Q:6. Do Q.No. 2 & 3 (Chapter No. 4)
- Q:7. Fill in the blanks (Chapter No. 4 Page No. 35)
- Q:8. Do Q.No. 1, 2 & 3 (Chapter No. 5)

ART & CRAFT

- Q:1. Make a wall hanging using various decorative items.

Note:- Learn the syllabus covered in the class.